

emj

Emergency Medicine Journal

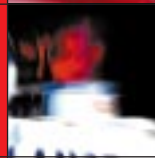
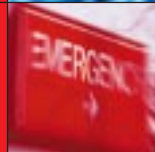
FORMERLY JOURNAL OF ACCIDENT & EMERGENCY MEDICINE

Critical Care Theme Issue

- | | |
|------------|---|
| 325 | Editorials
The interface between anaesthesia and emergency medicine |
| 326 | Improving the care of the seriously ill patient |
| 330 | Reviews
A&E/ICU interface |
| 333 | Emergency oxygen therapy for the COPD patient |
| 340 | Papers
Venous pH and evaluation of patients in the emergency department |
| 343 | Rapid sequence intubation |

See inside for full list of contents

Volume 18 Number 5 September 2001



www.emjonline.com

BMJ
Publishing
Group

Emergency Medicine Journal

September 2001

18
5

Vol 18 No 5 Pages 325-418