



Safe staffing for nursing in emergency departments: evidence review

Alejandra Recio-Saucedo,¹ Catherine Pope,² Chiara Dall'Ora,¹ Peter Griffiths,¹ Jeremy Jones,³ Robert Crouch,⁴ Jonathan Drennan²

► Additional material is published online only. To view please visit the journal online (<http://dx.doi.org/10.1136/emmermed-2015-204936>).

¹National Institute for Health Research Collaboration for Leadership in Applied Health Research and Care (Wessex), University of Southampton, Southampton, UK

²Faculty of Health Sciences, University of Southampton, Centre for Innovation and Leadership in Health Sciences, Southampton, UK

³Faculty of Medicine, University of Southampton, Southampton Health Technology Assessment Centre, Southampton, UK

⁴Emergency Department, University Hospitals Southampton NHS Trust, Southampton, UK

Correspondence to

Dr Alejandra Recio-Saucedo, University of Southampton, Building 67, Highfield, Southampton, SO17 1BJ, A.Recio-Saucedo@soton.ac.uk

Received 13 April 2015

Revised 18 June 2015

Accepted 8 July 2015

Published Online First

13 August 2015



► <http://dx.doi.org/10.1136/emmermed-2015-205242>



CrossMark

To cite: Recio-Saucedo A, Pope C, Dall'Ora C, et al. *Emerg Med J* 2015;**32**:888–894.

ABSTRACT

Objective Getting staffing levels wrong in hospitals is linked to excess mortality and poor patient experiences but establishing the safe nurse staffing levels in the emergency department (ED) is challenging because patient demand is so variable. This paper reports a review conducted for the National Institute for Health and Care Excellence (NICE) which sought to identify the research evidence to inform UK nursing workforce planning.

Design We searched 10 electronic databases and relevant websites for English language studies published from 1994. Studies included reported a direct measure of nurse staffing relative to an activity measure (eg, attendances, patient throughput) or an estimate of nurse staffing requirements. Randomised or non-randomised trials, prospective or retrospective observational, cross-sectional or correlational studies, interrupted time-series, and controlled before and after studies were considered.

Results We identified 16 132 items via databases and 2193 items through manual and other searching. After title/abstract screening (by one reviewer, checked by a second) 55 studies underwent full assessment by the review team. 18 studies met the inclusion criteria for the NICE review, however 3 simulation studies that reported simulated rather than measured outcomes are not reported here.

Conclusions The evidence is weak but indicates that levels of nurse staffing in the ED are associated with patients leaving without being seen, ED care time and patient satisfaction. Lower staffing is associated with worse outcomes. There remain significant gaps and in particular a lack of evidence on the impact of staffing on direct patient outcomes and adequate economic analyses to inform decisions about nurse staffing. Given that an association between nurse staffing levels and patient outcomes on inpatient wards has been demonstrated, this gap in the evidence about nurse staffing in EDs needs to be addressed.

INTRODUCTION

Inadequate staffing levels in hospitals has been linked to excess mortality and poor patient experiences.^{1–4} Safe nurse staffing requires that there are sufficient nurses with the required skills to meet patient needs, and that they are organised and managed in a way that enables them to deliver the highest quality of care possible. Establishing a safe nurse staffing level is a key challenge, notably in the emergency department (ED) where the acuity and quantity of patient demand is highly variable. Demands on EDs nationally and internationally are increasing. In England, the number of patients

attending consultant-led 24-h EDs with full resuscitation facilities has risen by approximately 12 per cent.⁵ Waiting times in major EDs have also risen: the percentage of patients seen in 4 h or less fell from 93.5% in 2013/2014 to 88.9% in 2014/2015. The number of patients waiting on a trolley for admission increased from 33 909 in the winter of 2010/2011 to 105 770 in the winter of 2014/2015.⁶ These increasing demands have implications for safe staffing nursing requirements.

We conducted an evidence review for the National Institute for Health and Care Excellence (NICE) to identify research that could inform nursing staff requirements to support safe care in EDs across the UK. The review followed established NICE methodology for developing public health guidance⁷ and while directed towards UK policy, it includes international evidence to inform global debates about safe nurse staffing.

For the purpose of this review, we defined EDs as consultant-led 24-h services with full resuscitation facilities and designated accommodation for Accident and Emergency patients (sometimes referred to in the UK as a Type 1 ED). The nursing team was defined as those delivering 'hands on' nursing care to adults and children, to meet fundamental needs and providing technical care, including medication administration and necessary administrative work. Nurse staffing focused on the size and skill mix (number of registered nurses in proportion to healthcare assistants) of the nursing team relative to the number of patients cared for, expressed as nursing hours per patient day (the number of hours worked by registered nurses and healthcare assistants divided by the number of patient hours over a 24-h period), nurse patient ratios or an equivalent measure.

Our remit, agreed with NICE, was to review the literature reporting studies at department and organisation level to address six questions:

1. What patient outcomes are associated with safe nurse staffing?
2. What patient factors affect nursing staff requirements (eg, case mix and volume, acuity, dependency and other risk factors, including psychosocial complexity and safeguarding, informal (family) carer support, triage score and turnover)?
3. What staffing factors affect nursing requirements including services provided by staff who are not part of the core nursing establishment, division of tasks, models of nursing care (eg, triage, rapid assessment and treatment), nursing experience, skill mix and specialism, transfer duties within the hospital and to external



specialist units, nursing team management and administration, proportion of temporary nursing staff, and supervision and teaching?

4. What environmental factors affect nursing staff requirements including availability and physical proximity of other units and specialties/ services, department size and physical layout and department type (eg, major trauma centre)?
5. What organisational factors influence nursing staff requirements, including availability of other services or assessment models (ie, medical assessment units, ambulatory facilities or inpatient ward), crowding, management structures, organisational culture, policies and training?
6. What approaches for identifying nursing staff requirements, including toolkits, are effective, reliable and/or valid and how frequently should they be used?

For all questions we also considered relevant economic evaluations.

METHODS

Search strategy

We searched 10 electronic databases (Embase, CINAHL, CENTRAL, HTA, CDSR, DARE, NHS EED, NHS Evidence, Econlit and Medline) and seven relevant websites (American Nurses Association, Royal College of Nursing, Joanna Briggs Institute, Royal College of Emergency Medicine, Society for Acute Medicine, Faculty of Emergency Nursing, Trauma Audit & Research Network). Internet searches for grey literature and additional citation searching were also undertaken. A list of search terms is provided in the online supplement.

Inclusion criteria

The review covered literature published from 1994. To be included, studies had to report a direct measure of nurse staffing (eg, numbers of nurses on a shift, nursing hours per day) relative to a denominator based on activity (eg, attendances, patient throughput) as an independent variable or an estimate of nurse staffing requirements as a dependent variable. We considered randomised or non-randomised trials; prospective or retrospective observational studies; cross-sectional or correlational studies; interrupted time-series; controlled before and after studies. We included research published in English, and undertaken in the Organisation for Economic Co-operation and Development area (as per the NICE remit).

Studies focused on service redesign or reconfiguration, and those which looked exclusively at other members of the multi-disciplinary team, including emergency nurse practitioners or advanced nurse practitioners, were excluded. Likewise, we did not examine studies of single specialty EDs (ophthalmology or dental) or non-consultant (attending) led minor injuries units. Since aggregated findings allow the identification of issues at organisation level, potentially concealing variation at the level of units within organisations, work about nursing workforce planning or recruitment at network, regional or national levels was excluded.

Quality appraisal

A quality appraisal checklist based on the risk of bias assessment for cross-sectional studies published by NICE⁷ which was used in a previous review on safe staffing in acute care settings⁸ was used to assess risk of bias. Initial screening consisted of rapid exclusion based on title/abstract completed by one reviewer with a random 10% check by a second researcher. Any disagreements were resolved by recourse to a third independent reviewer.

Studies were rated for internal and external validity separately and corroborated by two researchers.

Search results were downloaded into the reference management software Endnote. Data were extracted on study aims, context/setting, research design, sample type and size, patient/nurse level risk adjustment, intervention, outcomes, conclusions. Summary tables of extracted data were produced and synthesised in a narrative form.

RESULTS

We identified 16 132 items via databases and 2193 items through manual and other searching. After title/abstract screening (by one reviewer, checked by a second) 55 studies underwent full paper assessment and 18 studies met the criteria and were included in the final review (see figure 1). Three simulation studies that reported simulated rather than measured outcomes are not reported here as we did not have access to details of the primary data collected, analyses and estimated relationships used to develop these simulations.

Figure 2 illustrates the dispersed evidence currently available to inform nurse staffing in ED settings. Some studies looked at more than one outcome; most outcomes were examined in single studies, making it difficult to identify trends or meaningful patterns.

Below we present the evidence provided by the studies structured around the research questions.

Patient outcomes associated with nurse staffing (review question 1)

Nine studies explored the relationship between outcomes and nurse staffing^{9–17} (table 1). The majority of these (six out of nine studies) were observational studies undertaken in single ED departments, which received between 30 000 and 180 000 patients per year. Seven out of nine studies were completed in the USA. Most of the studies were assessed as high risk of bias, limited on internal (five out of nine) or external validity (eight out of nine). A particular risk of bias associated with many studies was that the relationships reported are influenced by endogeneity (outcomes and staffing levels are influenced by patient need), which could result in attenuated staffing outcome associations or apparent counterintuitive results whereby higher staffing levels are associated with worse outcomes.

Outcomes reported included patient waiting times, time spent in the ED, patients who left without being seen, patient satisfaction, medication errors, time to aspirin or antibiotic administration, and ambulance diversion. The evidence regarding patient waiting times is mixed. However, there is evidence that lower levels of ED staffing are associated with increased levels of

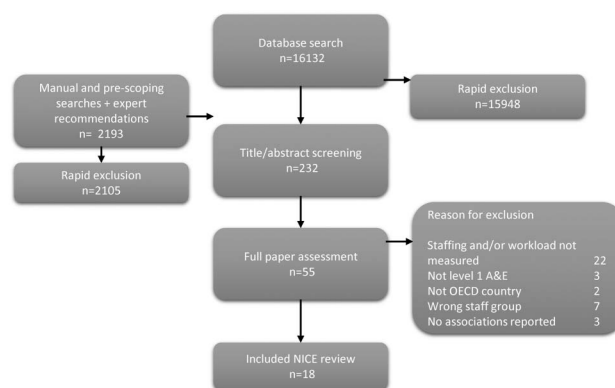


Figure 1 Study selection flow chart.

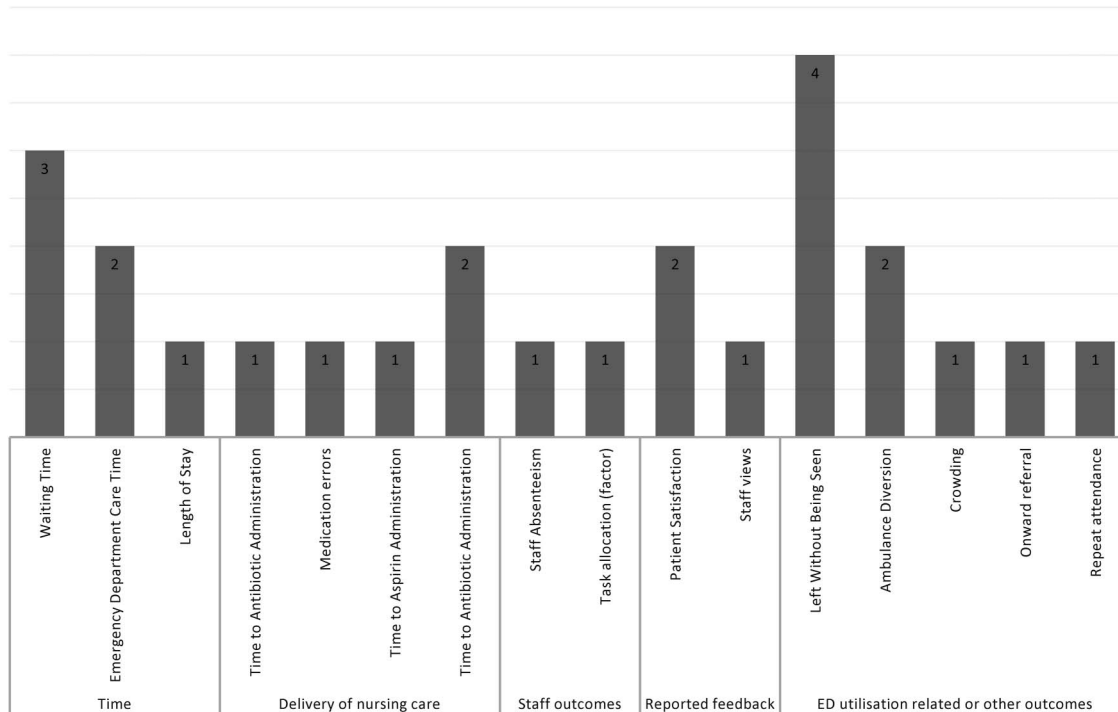


Figure 2 Range of outcomes measured.

patients leaving without being seen. Studies in the USA¹¹ found short-staffing of registered nurses to be a predictor of a higher number of patients leaving without being seen (OR 2.4; 95% CI 1.3 to 4.5, $p \leq 0.006$); the number of nursing vacancies (full time equivalent (FTE)) was strongly correlated with the percentage of patients leaving without being seen ($r=0.89$, $p=0.007$)¹² and registered nurses to patient ratio was significantly associated with odds of patients leaving without being seen (OR 6; 95% CI 2.3 to 15.4).¹³

Time spent in an ED bed before discharge or transfer to an inpatient bed was reported to increase¹⁰ when nurse staff was out-of-ratio (ratios defined as 1:1 for trauma resuscitation patients, 1:2 for critical patients, 1:4 for all other ED patients), with 37% longer care time (95% CI 34% to 41%, $p < 0.001$) in two sites combined. Increases in nurse staff skill mix was associated with increased patient satisfaction.¹⁵ Longer lengths of stay for patients in ED were associated with an increase in hospital occupancy rates, additional patients admitted to the wards and the number patients admitted to intensive care unit (ICU) from the ED.¹⁶ No association was found between ED nurse staffing medication errors, time to antibiotics, ambulance diversion or patients' time in the ED.

Staffing, patient, organisational or environmental factors, and nurse staffing requirements (review questions 2–5)

With regards to other staffing, patient, organisational, and environmental factors affecting nurse staff requirements, two studies^{18 19} (table 2) explored the introduction of a specialist psychiatric nursing service and absenteeism (staffing), one study²⁰ explored workload and patient acuity (patient factors) and one²¹ explored the association between hospital-wide bed capacity, nursing and physician numbers at hospital level and waiting time (organisational factors). All four studies had significant risk of bias due to limitations in internal validity, and three out of four studies were assessed as having limitations in external validity. There were no studies that provided evidence regarding environmental factors.

A US study about task allocation²⁰ analysed 63 nursing shifts and found that on average registered nurses spent 25.6% of their time performing direct patient care, 48.4% on indirect patient care, 6.8% on non-registered nurse (RN) care and 19.1% on personal time (meal and toilet breaks, reading, non-patient-related conversation). Personal task allocation varied with increasing direct and indirect patient care, with non-RN care remaining relatively constant, and decreasing personal time.

One UK study assessed the impact of a dedicated specialist psychiatric nurse service on patient outcomes using a before and after cross-over design, assessed as weak for internal and external validity.¹⁸ This staffing intervention had no association with waiting times (hospital 1 $p=0.76$ and hospital 2 $p=0.76$), repeat attendances or patient satisfaction levels for people with mental health problems; however, there was evidence of difference of the referral of patients with mental health problems seen by the psychiatric nurse service when compared with the preintervention period. Patients seen by a psychiatric nurse who were recognised as having mental health problems were more likely to be transferred to a mental health unit than admitted to a medical ward ($p < 0.001$), referred to an outpatient clinic ($p=0.027$) and less likely to be discharged against medical advice ($p=0.001$). The study found no association with waiting times, repeat attendances or satisfaction levels for mental health patients.

A retrospective observational study,²¹ assessed as weak in terms of internal and external validity, modelled the impact of changing organisational variables on patient care time (time between being seen by a doctor and being admitted to hospital). This reported that a 1% change in the mean number of nurses at hospital level was associated with a 2.4% fall in ED waiting time and that an increase of 1% in the bed capacity was associated with a 3% fall in waiting time.

We found no studies regarding the influence of environmental factors such as physical layout on nurse staffing requirements.

Table 1 Patient outcomes associated with nurse staffing*

Author	Country	Design	No of EDs	Comparisons	Outcome	Key results	Patients seen (census)	Internal validity	External validity
Brown <i>et al</i> ¹¹	USA	Retrospective Observational	1	Actual compared with scheduled RN staffing hours	Left without being seen	RNs staffing predictor of a higher number of patients leaving without being seen	50 000	–	–
Chan <i>et al</i> ¹⁴	USA	Prospective Observational	2	Mandated nurse-patient ratios compared with out-of-ratio care	Time to antibiotic administration	Shorter time to antibiotic administration if nurse staff in ratio	61 000	+	–
Chan <i>et al</i> ¹⁰	USA	Prospective Observational	2	Mandated nurse-patient ratios compared with out-of-ratio care	Waiting time Emergency department care time	Longer wait times when the ED overall was out-of-ratio. Longer ED care time for patients whose nurse was out-of-ratio.	59 733	+	–
Daniel ¹⁵	Can	Retrospective Observational	107	Nurse-patient ratios	Patient satisfaction	Increase in overall patient satisfaction associated with nurse staff skill mix. Per cent of full-time nursing worked hours negatively associated with overall patient satisfaction. Physician and nurse courtesy highly associated with patient satisfaction.	182 022	+	+
Greci <i>et al</i> ¹³	USA	Cross-sectional	1	Staff workload when the ED was crowded and not crowded	Left without being seen Ambulance diversion	RN:patient ratio significantly associated with patient leaving without being seen No association with ambulance diversion RN:patient ratio significantly associated with perception of crowding	30 000	–	–
Hoxhaj <i>et al</i> ¹²	USA	Retrospective Observational	1	Nurse staffing levels	Left without being treated	No. of nursing vacancies (FTE) strongly correlated with percentage of patients who left without being treated Total monthly nursing hours to monthly ED census ratio strongly correlated with percentage of patients who left without being treated	92 000	–	–
Rathlev <i>et al</i> ¹⁶	USA	Time series	1	Number of ED nurses on duty Hospital occupancy Number of patients admitted to the hospital Number of patients admitted from ED to ICU Number of ED resuscitation cases	Length of stay (LOS)	Numbers of nurses, ED discharges on previous shift, resuscitation cases, and elective surgical admissions not associated with LOS on any shift. LOS reduced per additional nurse (average staff level unclear)	91 643	+	–
Schull <i>et al</i> ¹⁷	Can	Retrospective Observational	1	Number of patients boarded in the ED Number of ED nurse hours worked per shift Number of emergency physicians per shift	Ambulance diversion	Number of admitted patients boarded in the ED predictor of increased ambulance diversion ED nurse hours not associated with crowding	37 999	–	–
Weichenthal and Hendey ⁹	USA	Before and after	1	Nurse-patient ratios	Waiting times, Left without being seen, Medication errors Time to aspirin administration Time to antibiotic administration	After the introduction of nursing ratios ▶ wait times increased significantly ▶ Percentage of patients who left without being seen decreased ▶ No significant change in reported medication errors after the implementation of nursing ratios ▶ No significant change in the rate of aspirin administration. ▶ For patients with pneumonia, decrease time from written order to administration of antibiotics	59 163 (before) 55 976 (after)	–	–

*Internal/external validity (+, –). The summary bias assessment was completed from a detailed evaluation that considered risk adjustment, data completion and sampling strategy across data sources, outcome types and levels. Ratings were summarised to give a + for some of the assessment criteria fulfilled and conclusions unlikely to change or – for few criteria fulfilled and conclusions likely to change. During quality assessment, no studies were rated ++ indicating that the method was likely to minimise bias or with conclusions unlikely to change.
ED, emergency department.

Table 2 Staffing, patient, organisational or environmental factors and nurse staffing requirements

Study	Country	Design	Number of EDs	Comparisons	Outcome	Key results	Patients seen	Internal validity	External validity
Green <i>et al</i> ¹⁹	USA	Prospective Observational	1	Workload as defined by nurse-patient ratios	Staff absenteeism	Failure to incorporate absenteeism as an endogenous effect results in understaffing. Nurse absenteeism is exacerbated when fewer nurses are scheduled for a particular shift. No quantitative results were reported	Not stated	-	-
Harris and Sharma ²¹	Aus	Retrospective Observational	38	Annual average of nurses, physicians and beds at hospital level	Patient care time in the ED	A 1% change in the mean number of nurses (from 998 to 1008) is associated with a 2.38% fall in waiting time (from 396 min to 3871/49 min) assuming all other variables remain at their mean values.	Not stated	-	+
Hobgood <i>et al</i> ²⁰	USA	Prospective Observational	1	Workload (nurse-patient ratio ED acuity index)	Task allocation	RNs spent 25.6% of their time performing direct patient care; 48.4% on indirect patient care; 6.8% on non-RN care and 19.1% on personal time. The correlation between the ED acuity index and the patient-to-nurse ratio was 0.98.	60 000	-	-
Sinclair <i>et al</i> ¹⁸	UK	Before and after	2	Prior to and following the introduction of a specialist psychiatric nursing service	Waiting times Onward referral Repeat attendance Patient satisfaction Staff views	Average waiting times at each hospital shortest during the intervention period. No significant differences between preintervention and intervention periods at either site (hospital 1, $p=0.763$; hospital 2, $p=0.076$). Significant difference in onward referral patterns between intervention and non-intervention periods of the study at both sites (hospital 1, $\chi^2=28.8$, $p=0.001$; hospital 2, $\chi^2=25.3$, $p=0.01$). Levels of satisfaction recorded were high for all patients with no significant differences between intervention and non-intervention periods.	Dept: 1=55 000 Dept: 2=70 000	-	-

ED, emergency department.

Effective approaches for identifying nursing staff requirements (review question 6)

Two studies reported on toolkits to determine staffing levels in the ED^{22 23} (table 3). One²³ compared nursing work required against the actual number of nurses in the shift, but did not provide sufficient information to assess the reliability or validity of the tools used. The second tested the validity, reliability and generalisability of the Jones Dependency Tool (JDT)²² and identified a significant correlation between JDT and the nurses' subjective ratings of patient dependency ($R=0.786$, $p<0.001$). There was a positive relationship between the amount of time spent by nurses in direct care of patients and the patient's level of dependency ($R=0.72$, $p<0.001$). The study also identified a relationship between JDT scores measured over time (Cohen's $\kappa=0.68$) as well as acceptable levels of inter-rater reliability between JDT and nurses' subjective rating ($\kappa=0.75$). However, there was no external validation other than the subjective rating of staff adequacy and no measure of association with outcomes.

DISCUSSION

This review identified a number of outcomes that appear to be associated with nurse staffing levels in ED. While the evidence is not strong, it appears to indicate that levels of nurse staffing in the ED are associated with patients leaving without being seen, ED care time and patient satisfaction. Lower staffing is associated with worse outcomes. We did not find strong evidence that waiting times, medication errors, and the rate of aspirin administration or ambulance diversion are affected by nurse staffing levels. There is conflicting evidence from two weak studies on the association between nurse staffing and time to antibiotics for patients with pneumonia. There was evidence from one study that patients with mental health problems seen by a dedicated psychiatric nurse in an ED were more likely to be transferred to a mental health unit.

At an organisational level, longer lengths of stay for patients in ED were associated with an increase in hospital occupancy, additional patients admitted to the wards and the number patients admitted to ICU from the ED.¹⁶ One study,²¹ identified that increases in the number of nurses and doctors, and bed capacity in a hospital was associated with a reduction in the average waiting time in ED. Another study²⁰ showed that as workload increased, direct and indirect patient care also increased while personal time decreased. There is no evidence of the effectiveness of toolkits for identifying staffing requirements although there is a suggestion that the JDT can be used to determine nursing workload in EDs.²²

This review has some limitations. The focus and scope of the review was determined by the remit provided by NICE and was necessarily tailored to the UK policy environment. Nonetheless our findings and conclusions have relevance beyond this context. We limited our search to studies in English, from Organisation for Economic Co-operation and Development countries, and only explored those that reported on the observed associations between staffing levels and patient outcomes. We have not reported on simulation and modelling studies as we did not have access to details of the primary data or relationships used to develop these. However the three simulation studies we examined for the larger NICE review do not alter the conclusions offered in this paper. All the studies reviewed were observational, no randomised controlled trials were identified and this is a significant weakness of study design and therefore of the evidence base.

Furthermore, research exploring associations between staffing levels and outcomes needs to explore thresholds which might

Table 3 Approaches for identifying nursing staff requirements

Study	Country	Design	Number of EDs	Comparisons	Outcomes	Results	Patients seen	Internal validity	External validity
Crouch and Williams ²²	UK	Prospective Observational	6	N/A	Dependency score	The higher the amount of time spent by nurses in direct care of patients the higher the patient's level of dependency (R=0.72, p<0.001). Age was significantly associated with dependency—for a 10 year age difference the score increase by 0.51 (95% CI 0.43 to 0.59). There was a significant correlation between triage rating and Jones Dependency Tool scores (R=0.58, p<0.001). Highly significant correlation between the Jones Dependency Tool scores and the nurses' subjective ratings of patient dependency (R=0.786, p<0.001).	840	+	-
Korn and Mansfield ²³	USA	Prospective Observational	1	N/A	N/A	Factors influencing staff requirements were acuity-based norms (time for new admissions and nurse to staff ratios (from 1:2 for ICU to 1:10 for regular admissions) for those waiting for a bed. Results were model tabulations stating whether ED was 'OK' or 'Overloaded' based on patient numbers/ acuity and model assumptions.	N/A	-	-

ED, emergency department

help identify adequate staffing levels, rather than only modelling linear associations. The patient populations and outcome measures varied across the research reviewed, as did the quality of the included studies which makes generalisation problematic. Synthesis of findings was not possible, in part due to the diverse outcomes studied (see figure 2). While clearly no single outcome can fully reflect safe and effective staffing in emergency departments, future research would benefit from a more consistent approach to measurement which may include utilisation (waiting times and left without being seen), safety (e.g. drug administration errors) and measures of staff wellbeing (job satisfaction and staff turnover).

CONCLUSION

There remain significant evidence gaps, notably a lack of evidence on the impact of staffing on direct patient outcomes such as mortality, failure to rescue, never events, time to pain assessment or falls. This is in stark contrast to the evidence base for the association between ward based nurse staffing and patient outcomes, which is large and offers strong evidence that lower nurse staffing levels are associated with higher rates of mortality and failure to rescue in North America, Europe and elsewhere^{24 25–28} although evidence that this relationship is causal and for relationships with other outcomes remains limited.²⁹ Moreover there is no adequate economic evidence that could inform decision making about nurse staffing in EDs. Given compelling evidence of association between nurse staffing levels and patient outcomes on inpatient wards, further research is urgently needed to guide decision making about nurse staffing in EDs.

Twitter Follow Alejandra Recio-Saucedo at @lexia14

Acknowledgements The authors thank Karen Welch, Information Scientist, for conducting the literature searches.

Contributors CP, PG, RC, JJ, JD designed the review and developed the protocol. JD supervised the review. All team members were involved in independent screening, review and assessment of papers and data extraction. AR-S and CDO retrieved papers, coordinated the review activities, and synthesised the evidence. All authors were involved in drafting and editing the manuscript.

Funding The work reported here is drawn from a review initially conducted under a contract for NICE. Members of the research team are funded by the National Institute for Health Research Collaboration for Leadership in Applied Health Research and Care (CLAHRC) Wessex. The views and opinions expressed therein are those of the authors and do not necessarily reflect those of the CLAHRC, NIHR, NHS or the Department of Health.

Competing interests None declared.

Provenance and peer review Not commissioned; externally peer reviewed.

Data sharing statement The full report of the NICE review is available at (<https://www.nice.org.uk/guidance/indevelopment/gid-sgwave0762/documents>). Full citations for all papers included in the review are provided in the manuscript.

REFERENCES

- Berwick D. *A promise to learn—a commitment to act. Improving the safety of patients in England. National Advisory Group on the Safety of Patients in England.* London: Stationery Office, 2013.
- Francis R. *Independent inquiry into care provided by mid Staffordshire NHS Foundation Trust January 2005-March 2009.* Vol. 375. The Stationery Office, 2010.
- Francis R. *The Mid Staffordshire NHS Foundation Trust Public Inquiry—Chaired by Robert Francis QC.* Report of the Mid Staffordshire NHS Foundation Trust Public Inquiry. Executive summary. London: TSO, 2013.
- Keogh B. *Review into the quality of care and treatment provided by 14 hospital trusts in England: overview report.* NHS, 2013.
- What's going on in A&E? The key questions answered. 14 January 2015. http://www.kingsfund.org.uk/projects/urgent-emergency-care/urgent-and-emergency-care-mythbusters?utm_source=kftwitter&utm_medium=social
- Blunt I, Edwards N, Merry L *What's Behind the A&E 'Crisis'?* Nuffield Trust, 2015.
- NICE. *Methods for the development of NICE public health guidance—third edition (2012).* National Institute for Health and Clinical Excellence, 2012.

- 8 Griffiths P, Ball J, Drennan J, *et al*. *The association between patient safety outcomes and nurse/healthcare assistant skill mix and staffing levels & factors that may influence staffing requirements (NICE Evidence review)*. UK: NICE, 2014.
- 9 Weichenthal L, Hendey GW. The effect of mandatory nurse ratios on patient care in an emergency department. *J Emerg Med* 2011;40:76–81.
- 10 Chan TC, Killeen JP, Vilke GM, *et al*. Effect of mandated nurse-patient ratios on patient wait time and care time in the emergency department. *Acad Emerg Med* 2010;17:545–52.
- 11 Brown L, Arthur B, Lynch W, *et al*. Impact of nursing short-staffing and emergency department left without being seen. *Ann Emerg Med* 2012;Conference(var. pagings);60;4:S97.
- 12 Hoxhaj S, Moseley MG, Reese CL. Nurse staffing levels affect the number of emergency department patients who leave without treatment. *Acad Emerg Med* 2004;11:459.
- 13 Greci LS, Parshalle CE, Calvitti A, *et al*. CrowdED: crowding metrics and data visualization in the emergency department. *J Public Health Manag Pract* 2011;17: E20–8.
- 14 Chan TC, Vilke J, Killeen D, *et al*. Impact of mandated nurse-patient ratios on time to antibiotic administration in the emergency department. *Ann Emerg Med*, 2009; Conference(var.pagings):3.
- 15 Daniel I. *The relationship between nurse staffing and patient satisfaction in emergency departments*. Canada: University of Toronto, 2012:209.
- 16 Rathlev NK, Obendorfer D, White L, *et al*. Time series analysis of emergency department length of stay per 8-hour shift. *West J Emerg Med* 2012;13:163–8.
- 17 Schull MJ, Lazier K, Vermeulen M, *et al*. Emergency department contributors to ambulance diversion: a quantitative analysis. *Ann Emerg Med* 2003;41: 467–76.
- 18 Sinclair L, Lazier K, Vermeulen M, *et al*. How effective are mental health nurses in A&E departments? *Emerg Med J* 2006;23:687–92.
- 19 Green LV, Savin S, Savva N. "Nurse/vendor Problem": personnel staffing in the presence of endogenous absenteeism. *Manag Sci* 2013;59:2237–56.
- 20 Hobgood C, Villani J, Quattlebaum R. Impact of emergency department volume on registered nurse time at the bedside. *Ann Emerg Med* 2005;46:481–9.
- 21 Harris A, Sharma A. Access block and overcrowding in emergency departments: an empirical analysis. *Emerg Med J* 2010;27:508–11.
- 22 Crouch R, Williams S. Patient dependency in the emergency department (ED): Reliability and validity of the Jones Dependency Tool (JDT). *Accid Emerg Nurs* 2006;14:219–29.
- 23 Korn R, Mansfield M. ED overcrowding: an assessment tool to monitor ED registered nurse workload that accounts for admitted patients residing in the emergency department. *J Emerg Nurs* 2008;34:441–6.
- 24 Kane RL, Shamliyan TA, Mueller C, *et al*. The association of registered nurse staffing levels and patient outcomes: systematic review and meta-analysis. *Med Care* 2007;45:1195–204.
- 25 Rafferty AM, Clarke SP, Coles J, *et al*. Outcomes of variation in hospital nurse staffing in English hospitals: Cross-sectional analysis of survey data and discharge records. *Int J Nurs Stud* 2007;44:175–82.
- 26 Aiken LH, Sloane DM, Bruyneel L, *et al*. Nurse staffing and education and hospital mortality in nine European countries: a retrospective observational study. *Lancet* 2014;383:1824–30.
- 27 Duffield C, Diers D, O'Brien-Pallas L, *et al*. Nursing staffing, nursing workload, the work environment and patient outcomes. *Appl Nurs Res* 2011;24:244–55.
- 28 Griffiths P, Jones S, Bottle A. Is "failure to rescue" derived from administrative data in England a nurse sensitive patient safety indicator for surgical care? Observational study. *Int J Nurs Stud* 2013;50:292–300.
- 29 Griffiths P, *et al*. *The association between patient safety outcomes and nurse/healthcare assistant skill mix and staffing levels and factors that may influence staffing requirements (NICE evidence review)*. University of Southampton Centre for innovation and Leadership in Health Sciences, 2014.

Literature Search Strategy: Safe Staffing in ED

Database 1: N= 11062 (Medline MEIP Embase, Econlit, Cochrane, CRD)

Database 2: N=5070 in Cinahl database.

(separate because of download problems & system errors - not wishing to corrupt main database if there were problems).

Total N=16132 – before de-duplication.

Keywords added (as listed in column 1 below: per database name & also EMERGENCY NURSING SAFE STAFFING SEARCH KW)

Databases, Host Years Searched Keywords Added	Search Strategy	Results
Ovid MEDLINE(R) 1946 to August Week 1 2014 Limited to 1994- 2014 Searched 16/08/2014 Keywords: MEDLINE EMERGENCY NURSING SAFE STAFFING SEARCH KW	<ol style="list-style-type: none"> 1 Nursing Staff, Hospital/ (38435) 2 Nursing Service Hospital/ (11693) 3 1 or 2 (47816) 4 exp Nurses/ (71171) 5 (nurse or nurses or nursing).tw. (318872) 6 (RN or "RNs" or "RN's").tw. (9147) 7 Nurses' Aides/ (3599) 8 ("healthcare assistant*" or "health care assistant*").tw. (354) 9 Nursing Administration Research/ (2253) 10 Nursing Audit/ (2979) 11 Models Nursing/ (11078) 12 or/4-11 (360241) 13 exp Hospitals/ (206502) 14 exp Hospital Units/ (79507) 15 hospital*.tw. (789951) 16 or/13-15 (930678) 17 12 and 16 (66472) 18 3 or 17 (100045) 19 Emergency Service, Hospital/ (44243) 20 ("emergency department*" or "emergency room*" or "emergency unit*" or "emergency ward*" or "emergency 	5277

Literature Search Strategy: Safe Staffing in ED

	<p>service*).tw. (60074)</p> <p>21 ("accident and emergency" or "A&E").tw. (14641)</p> <p>22 or/19-21 (90505)</p> <p>23 18 and 22 (4427)</p> <p>24 Emergency Nursing/ (5713)</p> <p>25 ((emergency or "A&E") adj5 nurs*).tw. (3369)</p> <p>26 24 or 25 (7797)</p> <p>27 23 or 26 (10832)</p> <p>28 (skill* adj1 mix*).tw. (636)</p> <p>29 skillmix*.tw. (6)</p> <p>30 (staffmix* or "staff mix*").tw. (78)</p> <p>31 (specialism* or specialist*).tw. (57030)</p> <p>32 (experience* or inexperience*).tw. (661839)</p> <p>33 (casemix or "case mix").tw. (4481)</p> <p>34 staffing.tw. (8736)</p> <p>35 understaff*.tw. (378)</p> <p>36 "under staff*".tw. (38)</p> <p>37 "Personnel Staffing and Scheduling"/ or "Personnel Staffing and Scheduling Information Systems"/ (14608)</p> <p>38 ("teamwork*" or "team work*").tw. (6820)</p> <p>39 ((staff* or team) adj3 (level* or ratio* or management or resourc* or model* or program* or policy or policies or number* or mix* or rota* or rosta* or roster* or schedul* or overtime or supervision or supervisory or administration or administrative or organization or organisation or turnover or "co-ordination")).tw. (16479)</p> <p>40 ((staff* or team*) adj3 (experienced or inexperienced or competen* or sufficient* or sufficiency or adequate* or knowledge or adequac* or target* or insufficient* or insufficienc* or inadequate* or inadequac* or short or shortage or efficient* or efficienc* or inefficien*)).tw. (6516)</p> <p>41 Health Manpower/ (11371)</p> <p>42 manpower.tw,fs. (61142)</p>	
--	--	--

Literature Search Strategy: Safe Staffing in ED

	<p>43 Personnel Turnover/ (3953) 44 (workload* or workforce* or workflow* or workplace or shift or shiftwork* or shifts or overtime or capacity).tw. (543526) 45 Workload/ (15816) 46 Workplace/og, st [Organization & Administration, Standards] (2276) 47 ("under pressure" or stress* or burnout or "burnt out").tw. (480255) 48 "care left undone".tw. (4) 49 ("missed care" or "missing care" or "deficit in care").tw. (36) 50 ("never event*" or "preventable event*" or "serious event*" or "serious adverse" or "preventable death*").tw. (15243) 51 maladministrat*.tw. (16) 52 ("medication error*" or "drug error*").tw. (3309) 53 ("risk of harm" or "risk factor*").tw. (332461) 54 (patient* adj1 safety).tw. (13691) 55 ("time to" or timeliness).tw. (1856115) 56 Time Factors/ (1017265) 57 ("safe care" or safeguard* or "unsafe care" or negligen*).tw. (9627) 58 safeguard*.tw. (5889) 59 ("length of stay" or "duration of stay").tw. (27598) 60 (bed* adj2 number*).tw. (1058) 61 ("bed block*" or "bed occupancy").tw. (536) 62 (patient* adj2 flow*).tw. (4988) 63 (complex* adj2 patient*).tw. (7996) 64 "patient* acuity".tw. (442) 65 "patient* dependency".tw. (179) 66 "patient outcome*").tw. (22802) 67 "number of attendances".tw. (75)</p>	
--	--	--

Literature Search Strategy: Safe Staffing in ED

	<p>68 "attendance pattern*".tw. (193) 69 "waiting time*".tw. (5770) 70 (crowding or crowded or overcrowding or overcrowded).tw. (10571) 71 "seasonal variation".tw. (6338) 72 (environment* or layout).tw. (534175) 73 health facility environment/ or health facility administration/ or health facility size/ (7582) 74 ("organizational culture*" or "organizational structure*").tw. (3460) 75 organizational culture/ (13146) 76 (model* adj2 triage).tw. (87) 77 (triage adj (system* or scoring)).tw. (484) 78 Triage/ma, mt, og, st [Manpower, Methods, Organization & Administration, Standards] (3580) 79 (patient* adj1 death*).tw. (4249) 80 (patient* adj1 mortality).tw. (3285) 81 (cost* or economic*).tw. (440683) 82 Knowledge Management/ (173) 83 Clinical Competence/ (66286) 84 Professional Competence/ (20507) 85 Accreditation/ (11536) 86 Safety Management/ (16668) 87 Management Audit/ (2390) 88 Quality Assurance, Health Care/ or Quality Improvement/ (54987) 89 Health Plan Implementation/ (3946) 90 Education, Continuing/ (7913) 91 Mentors/ (7613) 92 mentor*.tw. (7506) 93 Inservice Training/ (17395) 94 Problem Solving/ (21408) 95 Workflow/ (983)</p>	
--	---	--

Literature Search Strategy: Safe Staffing in ED

	<p>96 Efficiency, Organizational/ or Efficiency/ (29526) 97 Program Evaluation/ or Program Development/ (62939) 98 Patient Outcome Assessment/ or "Outcome Assessment (Health Care)"/ or "Outcome and Process Assessment (Health Care)"/ (72633) 99 Practice Guidelines as Topic/ (81751) 100 Documentation/ (14150) 101 Interprofessional Relations/ (44021) 102 (nursing and hours and patient and day).tw. (358) 103 NHPPD.tw. (7) 104 (nurs* and hours and care).tw. (3630) 105 (nurs* and work* and hours).tw. (1976) 106 (nurs* adj3 "patient* ratio*").tw. (272) 107 "nurse-patient-ratio".tw. (56) 108 (nurs* adj3 "patient* number*").tw. (3) 109 (nurs* and "whole time equivalent*").tw. (27) 110 (nurs* adj5 (temporary or bank or agency)).tw. (722) 111 (nurs* and adequate* and staff*).tw. (1327) 112 (nurs* and inadequate* and staff*).tw. (721) 113 ("nurs* unit*" and (organi?ation or characteristic* or outcome* or level*)).tw. (451) 114 (nurs* and deployment).tw. (325) 115 (nurs* and staff* and burnout).tw. (382) 116 (nurs* and staff* and stress).tw. (1152) 117 (nurs* and staff* and experience*).tw. (5619) 118 (nurs* and staff* and inexperience*).tw. (86) 119 (nurs* and staff* and fatigue).tw. (143) 120 (nurs* and staff* and practice).tw. (6483) 121 (nurs* and staff* and policy).tw. (1431) 122 (nurs* and staff* and policies).tw. (877) 123 (nurs* and staff* and speciali?ation).tw. (59) 124 (nurs* and staff* and audit*).tw. (828) 125 (nurs* and (toolkit* or "tool kit*")).tw. (125)</p>	
--	--	--

Literature Search Strategy: Safe Staffing in ED

	<p>126 (nurs* and (tool or tools)).tw. (10395) 127 (nurs* and magnet and staff*).tw. (141) 128 "magnet hospital*".tw. (241) 129 or/28-101 (5244134) 130 27 and 129 (6097) 131 or/102-128 (28804) 132 22 and 131 (1367) 133 130 or 132 (6512) 134 (comment or editorial or letter).pt. (1274658) 135 133 not 134 (6242) 136 limit 135 to (english language and yr="1994 -Current") (5277)</p>	
<p>Ovid MEDLINE(R) In-Process & Other Non-Indexed Citations August 15, 2014 MEIP EMERGENCY NURSING SAFE STAFFING SEARCH KW Searched 16/08/2014</p>	<p>As per Medline</p>	<p>348</p>
<p>Embase Ovid 1974 to 2014 August 18 Searched 19/08/14 Keywords Added: EMBASE EMERGENCY NURSING SAFE STAFFING SEARCH</p>	<p>1 emergency nursing/ (5158) 2 (emergency adj5 nurs*).tw. (4037) 3 1 or 2 (8082) 4 (skill* adj1 mix*).tw. (799) 5 skillmix*.tw. (7) 6 (staffmix* or "staff mix*").tw. (88) 7 (specialism* or specialist*).tw. (87618) 8 inexperience*.tw. (5466)</p>	<p>5313</p>

Literature Search Strategy: Safe Staffing in ED

KW	<p>9 (casemix or "case mix").tw. (5764)</p> <p>10 staffing.tw. (11656)</p> <p>11 understaff*.tw. (485)</p> <p>12 "under staff".tw. (48)</p> <p>13 teamwork/ (11713)</p> <p>14 ("teamwork*" or "team work*").tw. (9969)</p> <p>15 ((staff* or team) adj3 (level* or ratio* or management or resourc* or model* or program* or policy or policies or number* or mix* or rota* or rosta* or roster* or schedul* or overtime or supervision or supervisory or administration or administrative or organization or organisation or turnover or "co-ordination")).tw. (23811)</p> <p>16 ((staff* or team*) adj3 (experienced or inexperienced or competen* or sufficient* or sufficiency or adequate* or knowledge or adequac* or target* or insufficient* or insufficienc* or inadequate* or inadequac* or short or shortage or efficient* or efficienc* or inefficien*)).tw. (10014)</p> <p>17 manpower.tw. (7699)</p> <p>18 health care manpower/ or manpower planning/ (10674)</p> <p>19 (workload* or workforce* or workflow* or workplace or shift or shiftwork* or shifts or overtime or capacity).tw. (692852)</p> <p>20 Workload/ (28485)</p> <p>21 time management/ or turnaround time/ or time to treatment/ or turnover time/ or working time/ (21097)</p> <p>22 organization/ or organizational efficiency/ (109840)</p> <p>23 job satisfaction/ (22030)</p> <p>24 work environment/ (16670)</p> <p>25 ("under pressure" or stress* or burnout or "burnt out").tw. (639039)</p> <p>26 "care left undone".tw. (6)</p> <p>27 ("missed care" or "missing care" or "deficit in care").tw. (42)</p>	
----	---	--

Literature Search Strategy: Safe Staffing in ED

	<p>28 ("never event*" or "preventable event*" or "serious event*" or "serious adverse" or "preventable death*").tw. (24296)</p> <p>29 maladministrat*.tw. (22)</p> <p>30 ("medication error*" or "drug error*").tw. (5434)</p> <p>31 medication error/ (12563)</p> <p>32 ("risk of harm" or "risk factor*").tw. (477548)</p> <p>33 (patient* adj1 safety).tw. (21038)</p> <p>34 timeliness.tw. (3114)</p> <p>35 ("safe care" or safeguard* or "unsafe care" or negligen*).tw. (12822)</p> <p>36 "length of stay".tw. (45496)</p> <p>37 "duration of stay".tw. (2022)</p> <p>38 (bed* adj2 number*).tw. (1705)</p> <p>39 ("bed block*" or "bed occupancy").tw. (796)</p> <p>40 (patient* adj2 flow*).tw. (7217)</p> <p>41 (complex* adj2 patient*).tw. (12121)</p> <p>42 "patient* acuity".tw. (609)</p> <p>43 patient acuity/ (174)</p> <p>44 "patient* dependency".tw. (205)</p> <p>45 "patient outcome*".tw. (34932)</p> <p>46 patient safety/ (54544)</p> <p>47 outcome assessment/ (249514)</p> <p>48 "number of attendances".tw. (110)</p> <p>49 "attendance pattern*".tw. (227)</p> <p>50 "waiting time*".tw. (8772)</p> <p>51 (crowding or crowded or overcrowding or overcrowded).tw. (13160)</p> <p>52 "crowding (area)"/ (375)</p> <p>53 "seasonal variation".tw. (8653)</p> <p>54 (environment* or layout).tw. (715129)</p> <p>55 ("organi?ational culture*" or "organi?ational structure*").tw. (4485)</p>	
--	--	--

Literature Search Strategy: Safe Staffing in ED

56	(model* adj2 triage).tw. (113)	
57	(triage adj (system* or scoring)).tw. (722)	
58	(patient* adj1 death*).tw. (6453)	
59	(patient* adj1 mortality).tw. (5433)	
60	(cost* or economic*).tw. (618066)	
61	Knowledge Management/ (859)	
62	Clinical Competence/ (42776)	
63	Accreditation/ (27022)	
64	continuing education/ (27228)	
65	professional development/ or professional competence/ or professional knowledge/ or professional standard/ (61491)	
66	total quality management/ or "quality of nursing care"/ or quality control procedures/ (25995)	
67	practice guideline/ (238485)	
68	medical documentation/ (20823)	
69	decision support system/ (13247)	
70	(mentor* or coaching).tw. (13298)	
71	Inservice Training/ (13784)	
72	Problem Solving/ (26431)	
73	Workflow/ (4265)	
74	patient scheduling/ (934)	
75	Program Evaluation/ or Program Development/ (19069)	
76	health care quality/ or personnel management/ or "organization and management"/ (534065)	
77	"magnet hospital*".tw. (249)	
78	magnet hospital/ (17)	
79	standard/ (334056)	
80	or/4-79 (4335729)	
81	3 and 80 (4387)	
82	(nursing and hours and patient and day).tw. (671)	
83	NHPPD.tw. (6)	
84	(nurs* and hours and care).tw. (5847)	
85	(nurs* and work* and hours).tw. (3092)	

Literature Search Strategy: Safe Staffing in ED

	<p>86 (nurs* adj3 "patient* ratio*").tw. (350)</p> <p>87 "nurse-patient-ratio".tw. (78)</p> <p>88 (nurs* adj3 "patient* number*").tw. (5)</p> <p>89 (nurs* and "whole time equivalent*").tw. (48)</p> <p>90 (nurs* adj5 (temporary or bank or agency)).tw. (811)</p> <p>91 (nurs* and adequate* and staff*).tw. (2020)</p> <p>92 (nurs* and inadequate* and staff*).tw. (1077)</p> <p>93 ("nurs* unit*" and (organi?ation or characteristic* or outcome* or level*)).tw. (619)</p> <p>94 (nurs* and deployment).tw. (444)</p> <p>95 (nurs* and staff* and burnout).tw. (525)</p> <p>96 (nurs* and staff* and stress).tw. (1642)</p> <p>97 (nurs* and staff* and experience*).tw. (8350)</p> <p>98 (nurs* and staff* and inexperience*).tw. (123)</p> <p>99 (nurs* and staff* and fatigue).tw. (240)</p> <p>100 (nurs* and staff* and practice).tw. (8978)</p> <p>101 (nurs* and staff* and policy).tw. (2076)</p> <p>102 (nurs* and staff* and policies).tw. (1204)</p> <p>103 (nurs* and staff* and speciali?ation).tw. (92)</p> <p>104 (nurs* and staff* and audit*).tw. (1879)</p> <p>105 (nurs* and (toolkit* or "tool kit*")).tw. (239)</p> <p>106 (nurs* and (tool or tools)).tw. (15330)</p> <p>107 (nurs* and magnet and staff*).tw. (161)</p> <p>108 or/82-107 (41302)</p> <p>109 *emergency health service/ or *emergency ward/ (51096)</p> <p>110 ("emergency department*" or "emergency room*" or "emergency unit*" or "emergency ward*" or "emergency service*").tw. (91789)</p> <p>111 "accident and emergency".tw. (4735)</p> <p>112 or/109-111 (122630)</p> <p>113 108 and 112 (2325)</p> <p>114 (emergency and nurs* and staffing).tw. (326)</p>	
--	---	--

Literature Search Strategy: Safe Staffing in ED

	<p>115 (emergency and RN* and staffing).tw. (22) 116 81 or 113 or 114 or 115 (6383) 117 limit 116 to (english language and yr="1994 -Current") (5539) 118 limit 117 to (editorial or letter) (226) 119 117 not 118 (5313)</p>	
<p>Cinahl (CINAHL Plus with Full Text (Cumulative Index of Nursing and Allied Health Literature) Searched 22/08/2014 Internal server errors 3 times running on first download – abandoned at record 3040. On re-entering database on 26/08/2014 I went through many screens to return to the correct page for download and got an Ebsco system error again. Decided to limit the search to</p>	<p>Limited to source type academic journal = 5070 S88 S5 AND S87 Limiters - Published Date: 19940101-20141231; Language: English; Publication Type: Academic Journal, Clinical Trial, Critical Path, Journal Article, Meta Analysis, Meta Synthesis, Nursing Interventions, Practice Guidelines, Protocol, Randomized Controlled Trial, Research, Research Instrument, Research Instrument Utilization, Research Instrument Validation, Standards, Systematic Review, Teaching Materials (5,822) View Details Edit Interface - EBSCOhost Research Databases Database - CINAHL Plus with Full Text S87 S6 OR S7 OR S8 OR S9 OR S10 OR S11 OR S12 OR S13 OR S14 OR S15 OR S16 OR S17 OR S18 OR S19 OR S20 OR S21 OR S22 OR S23 OR S24 OR S25 OR S26 OR S27 OR S28 OR S29 OR S30 OR S31 OR S32 OR S33 OR S34 OR S35 OR S36 OR S37 OR S38 OR S39 OR S40 OR S41 OR S42 OR S43 OR S44 OR S45 OR S46 OR S47 OR S48 OR S49 OR S50 OR S51 OR S52 OR S53 OR S54 OR S55 OR S56 OR S57 OR S58 OR S59 OR S60 OR S61 OR S62 OR S63 OR S64 OR S65 OR S66 OR S67 OR S68 OR S69 OR S70 OR S71 OR S72 OR S73 OR S74 OR S75 OR S76 OR S77 OR S78 OR S79 OR S80 OR S81 OR S82 OR S83 OR S84 OR S85 OR S86 S6 OR S7 OR S8 OR S9 OR S10 OR S11 OR S12 OR S13 OR S14 OR S15 OR S16 OR S17 OR S18 OR S19 OR S20 OR S21</p>	<p>5070</p>

Literature Search Strategy: Safe Staffing in ED

<p>the whole year where the database had gone odd before and exported that set and de-duplicated it internally afterwards.</p>	<p>OR S22 OR S23 OR S24 OR S25 OR S26 OR S27 OR S28 OR S29 OR S30 OR S31 OR S32 OR S33 OR S34 OR S35 OR S36 OR S37 OR S38 OR S39 OR S40 OR S41 OR S42 OR S43 OR S44 OR S45 OR S46 OR S47 OR S48 OR S49 OR S50 OR S51 OR S52 OR S53 OR S54 OR S55 OR S56 OR S57 OR S58 OR S59 OR S60 OR S61 OR S62 OR S63 OR S64 OR S65 OR S66 OR S67 OR S68 OR S69 OR S70 OR S71 OR S72 OR S73 OR S74 OR S75 OR S76 OR S77 OR ...Show Less Search modes - Boolean/Phrase View Results (1,314,699)</p> <p>S86 (MH "Magnet Hospitals") (1,978) S85 TX (staff* N5 (bank or agency or temporary (6,488) S84 TX "whole time equivalent" (611) S83 TX ("tool kit*" or toolkit*) (8,573) S82 (MH "Burnout, Professional") (4,976) S81 AB "patient ratio*" (297) S80 TX "nurse-patient-ratio" (2,787) S79 (MH "Nurse-Patient Ratio") (2,248) S78 AB (nurs* and hours and patient* and day (836) S77 TX NHPPD (82) S76 (MH "Documentation") (21,125) S75 (MH "Practice Guidelines") (45,551) S74 (MH "Program Development") OR (MH "Program Planning") OR (MH "Program Implementation") OR (MH "Program Evaluation") (48,697) S73 (MH "Organizational Efficiency") (6,624) S72 TX mentor* (41,644) S71 (MH "Mentorship") (9,159) S70 (MH "Education, Nursing, Continuing (11,193) S69 (MH "Nursing Audit") (849) S68 (MH "Quality of Care Research") (1,073) S67 (MH "Accreditation") OR (MH "Magnet Hospital Accreditation") (7,881)</p>	
--	--	--

Literature Search Strategy: Safe Staffing in ED

	<p>S66 (MH "Professional Competence") OR (MH "Clinical Competence") OR (MH "Competency Assessment") (36,651)</p> <p>S65 TX (cost* or economic*) (454,164)</p> <p>S64 (MH "Costs and Cost Analysis") OR (MH "Health Care Costs") OR (MH "Cost Benefit Analysis") OR (MH "Cost Savings") OR (MH "Nursing Costs") OR (MH "Health Facility Costs") OR (MH "Cost Control") Search modes - Boolean/Phrase View Results (69,526)</p> <p>S63 patient* N1 mortality (4,608)</p> <p>S62 TX patient* N1 death* (11,453)</p> <p>S61 TX (triage W1 (system* or scoring) (1,016)</p> <p>S60 TX model* N2 triage (144)</p> <p>S59 TX "outcome* assessment*" (27,583)</p> <p>S58 (MH "Outcome Assessment") (23,146)</p> <p>S57 TX ("organi?ational culture*" or "organi?ational structure*") (25,083)</p> <p>S56 (MH "Organizational Culture") (12,073)</p> <p>S55 TX (room* N5 (environment* or design* or layout*)) (4,918)</p> <p>S54 TX (unit* N5 (environment* or design* or layout*)) View Results (14,391)</p> <p>S53 TX (ward* N5 (environment* or design* or layout*)) (3,798)</p> <p>S52 (MH "Health Facility Environment") OR (MH "Work Environment") (21,983)</p> <p>S51 (MH "Hospital Design and Construction") OR (MH "Facility Design and Construction") (5,833)</p> <p>S50 TX "seasonal variation" (1,241)</p> <p>S49 TX (crowding or crowded or overcrowding or overcrowded) (10,535)</p> <p>S48 (MH "Crowding") (829)</p>	
--	--	--

Literature Search Strategy: Safe Staffing in ED

	<p>S47 TX "waiting time*" (8,345)</p> <p>S46 TX "attendance pattern*" (174)</p> <p>S45 TX "number of attendances" (104)</p> <p>S44 TX "patient* acuity" OR TX "patient* dependency" OR TX "patient* outcome*" (38,190)</p> <p>S43 TX (patient* N2 flow*) (7,133)</p> <p>S42 TX ("bed block*" or "bed occupancy") (3,642)</p> <p>S41 TX (bed* N2 number*) (4,033)</p> <p>S40 ("length of stay" or "duration of stay") (25,526)</p> <p>S39 (MH "Negligence") (3,912)</p> <p>S38 TX ("safe care" or safeguard* or "unsafe care" or negligen*) (29,608)</p> <p>S37 (MH "Time Factors") OR (MH "Turnaround Time") (101,008)</p> <p>S36 TX timeliness (4,735)</p> <p>S35 (MH "Patient Safety") (31,139)</p> <p>S34 TX patient* N1 safety (77,022)</p> <p>S33 (MH "Medication Errors") OR (MH "Health Care Errors") OR (MH "Treatment Errors") (18,277)</p> <p>S32 (MH "Risk Assessment") (51,349)</p> <p>S31 TX "risk of harm*" Search modes - Boolean/Phrase View Results (3,088)</p> <p>S30 TX ("medication error*" or "drug error*") (16,536)</p> <p>S29 TX maladministrat* (74)</p> <p>S28 TX ("never event*" or "preventable event*" or "serious event*" or "serious adverse" or "preventable death*") (11,241)</p> <p>S27 TX ("missed care" or "missing care" or "deficit in care") (117)</p> <p>S26 TX "care left undone" (21)</p> <p>S25 ("under pressure" or stress* or burnout or "burnt out") (114,567)</p> <p>S24 (MH "Work Environment") (17,975)</p>	
--	--	--

Literature Search Strategy: Safe Staffing in ED

	<p>S23 (MH "Workload") OR (MH "Workload Measurement") (10,145)</p> <p>S22 (workload* or workforce* or workflow* or workplace or shift or shiftwork* or shifts or overtime or capacity) (89,470)</p> <p>S21 (MH "Personnel Turnover") (3,022)</p> <p>S20 TX manpower (25,659)</p> <p>S19 (MH "Health Manpower") (1,908)</p> <p>S18 ((staff* or team*) N3 (experienced or inexperienced or competen* or sufficient* or sufficiency or adequate* or knowledge or adequac* or target* or insufficient* or insufficienc* or inadequate* or inadequac* or short or shortage or efficient* or efficienc* or inefficien*)) (4,888)</p> <p>S17 ((staff* or team) N3 (level* or ratio* or management or resourc* or model* or program* or policy or policies or number* or mix* or rota* or rosta* or roster* or schedul* or overtime or supervision or supervisory or administration or administrative or organization or organisation or turnover or "co-ordination")) (29,098)</p> <p>S16 TX teamwork* (24,400)</p> <p>S15 TX team W1 work* (10,845)</p> <p>S14 (MH "Teamwork") (9,924)</p> <p>S13 (MH "Personnel Staffing and Scheduling (22,280)</p> <p>S12 TX understaff* OR TX "under staff*" (4,393)</p> <p>S11 TX staffing (51,205)</p> <p>S10 TX casemix* OR TX "case mix*" (4,901)</p> <p>S9 TX experience* OR TX inexperience* (481,357)</p> <p>S8 TX staffmix* OR TX "staff mix*" (766)</p> <p>S7 TX skill* N1 mix* (6,964)</p> <p>S6 TX skillmix* (64)</p> <p>S5 S1 OR S2 OR S3 OR S4 (13,841)</p> <p>S4 emergency N5 nurs* (13,204)</p>	
--	--	--

Literature Search Strategy: Safe Staffing in ED

	<p>S3 (MH "Emergency Nurses Association") (389) S2 (MH "Emergency Nursing+") (11,617) S1 (MH "Emergency Nurse Practitioners") (246)</p>	
<p>ECONLIT Ebsco Host Searched 26/08/2014 Keywords: ECONLIT EMERGENCY NURSING SAFE STAFFING SEARCH KW</p>	<p>S5 S1 OR S2 OR S3 (26) S4 TX (ER and nurs*) (3) S3 hospital and emergency and nurs* (23) S2 (TX emergency N5 nurs* AND TX ((ward* or room* or unit*)) (3) S1 TX nurs* and emergency (26)</p>	<p>26</p>
<p>Cochrane Library CDSR DARE CENTRAL HTA NHSEED Searched 26/08/2014 Keywords: COCHRANE CDSR COCHRANE CENTRAL COCHRANE HTA COCHRANE NHSEED CRD NHSEED EMERGENCY NURSING SAFE STAFFING SEARCH KW</p>	<p>#1 MeSH descriptor: [Emergency Service, Hospital] explode all trees (1796) #2 (nurse or nurses or nursing):ti,ab (12778) #3 (RN or "RNs" or "RN's"):ti,ab (173) #4 MeSH descriptor: [Nurses' Aides] this term only (51) #5 ("healthcare assistant*" or "health care assistant*") (46) #6 MeSH descriptor: [Nursing Administration Research] this term only (35) #7 MeSH descriptor: [Nursing Audit] this term only (49) #8 MeSH descriptor: [Models, Nursing] this term only (159) #9 #2 or #3 or #4 or #5 or #6 or #7 or #8 (12982) #10 #1 and #9 (174) #11 MeSH descriptor: [Emergency Nursing] this term only (58) #12 #10 or #11 (210) #13 MeSH descriptor: [Personnel Staffing and Scheduling] this term only (108) #14 skill* near/3 mix* (69)</p>	<p>CDSR 7 DARE 7 CENTRAL 73 HTA 1 NHSEED 7 (Plus 3 from CRD NHSEED unique items added. Total N-98)</p>

Literature Search Strategy: Safe Staffing in ED

	<p>#15 staff* near/3 mix* (31) #16 staffing (9551) (9551) #17 (understaff* or "under staff*") (13) #18 ((staff* or team) near/3 (experienced or inexperienced or competen* or sufficient* or sufficiency or adequate* or knowledge or adequac* or target* or insufficient* or insufficienc* or inadequate* or inadequac* or short or shortage or efficient* or efficienc* or inefficien*)) (585) #19 ((staff* or team) near/3 (level* or ratio* or management or resourc* or model* or program* or policy or policies or number* or mix* or rota* or rosta* or roster* or schedul* or overtime or supervision or supervisory or administration or administrative or organization or organisation or turnover or "co-ordination")) (2164) #20 MeSH descriptor: [Health Manpower] this term only (12) #21 manpower (526) #22 (workload* or workforce* or shift or shiftwork* or shifts or overtime or capacity):ti,ab (19549) #23 MeSH descriptor: [Burnout, Professional] this term only (131) #24 burnout (255) #25 #13 or #14 or #15 or #16 or #17 or #18 or #19 or #20 or #21 or #22 or #23 or #24 (29971) #26 #12 and #25 (73) #27 NHPPD (0) #28 "nursing hours" (14) #29 nurse* near/3 "patient ratio*" (48) #30 "nurse-patient ratio*" (29) #31 nurs* near/2 staffing (1685) #32 ("nurs* unit*" and (organi?ation or characteristic* or outcome* or level*)) (80)</p>	
--	---	--

Literature Search Strategy: Safe Staffing in ED

	<p>#33 nurs* near/5 burnout (28) #34 nurs* near/5 stress (251) #35 nurs* near/5 fatigue (68) #36 nurs* and magnet and staffing (39) #37 (nurs* and (skillmix* or "skill mix*" or "staffmix*" or "staff mix*")) (55) #38 (nurs* and ("patient dependency" or "patient acuity")) (24) #39 #27 or #28 or #29 or #30 or #31 or #32 or #33 or #34 or #35 or #36 or #37 or #38 (2143) #40 #1 and #39 (35) #41 #26 or #40 Publication Year from 1994 to 2014, in Other Reviews, Trials, Technology Assessments and Economic Evaluations (79) #42 ("emergency nurs*" and staffing) Publication Year from 1994 to 2014 (42) #43 #41 or #42 (97) #44 #12 and #39 Publication Year from 1994 to 2014 (24) #45 #43 or #44 (95)</p> <p>(nhseed searched in CRD Yok database and 3 records added in)</p>	
--	--	--