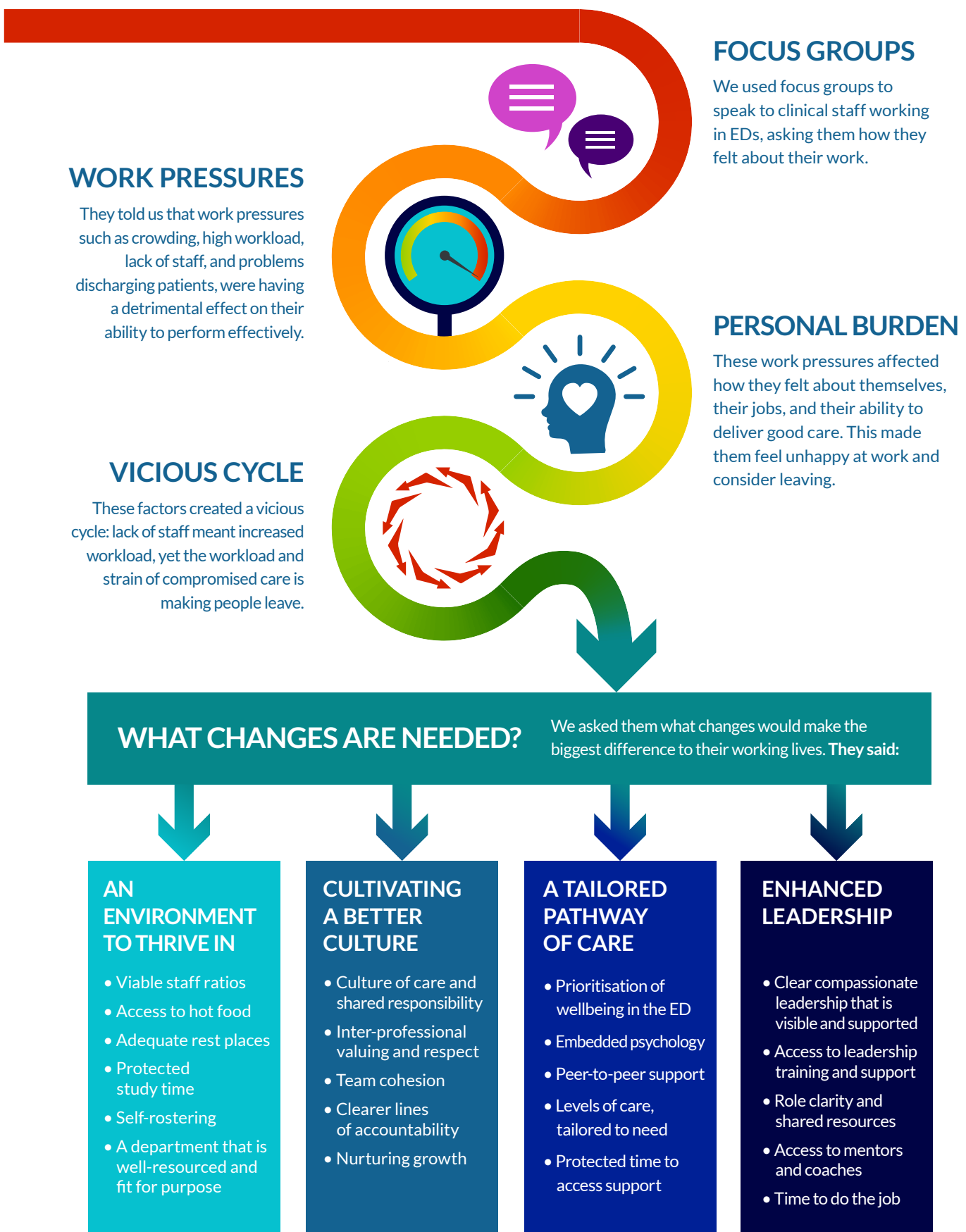




“We are just rearranging deckchairs on the titanic”

Retention of staff in emergency medicine is at crisis level

The PIPP project looks at the issue of retention in emergency medicine, taking a psychologically informed approach to understanding and identify key targets for change.



We know what is needed to make the ED a better place to work, but we need to act now – before there is no one left to take care of those who most need it most.

#PIPP